



High Safety



High Efficiency

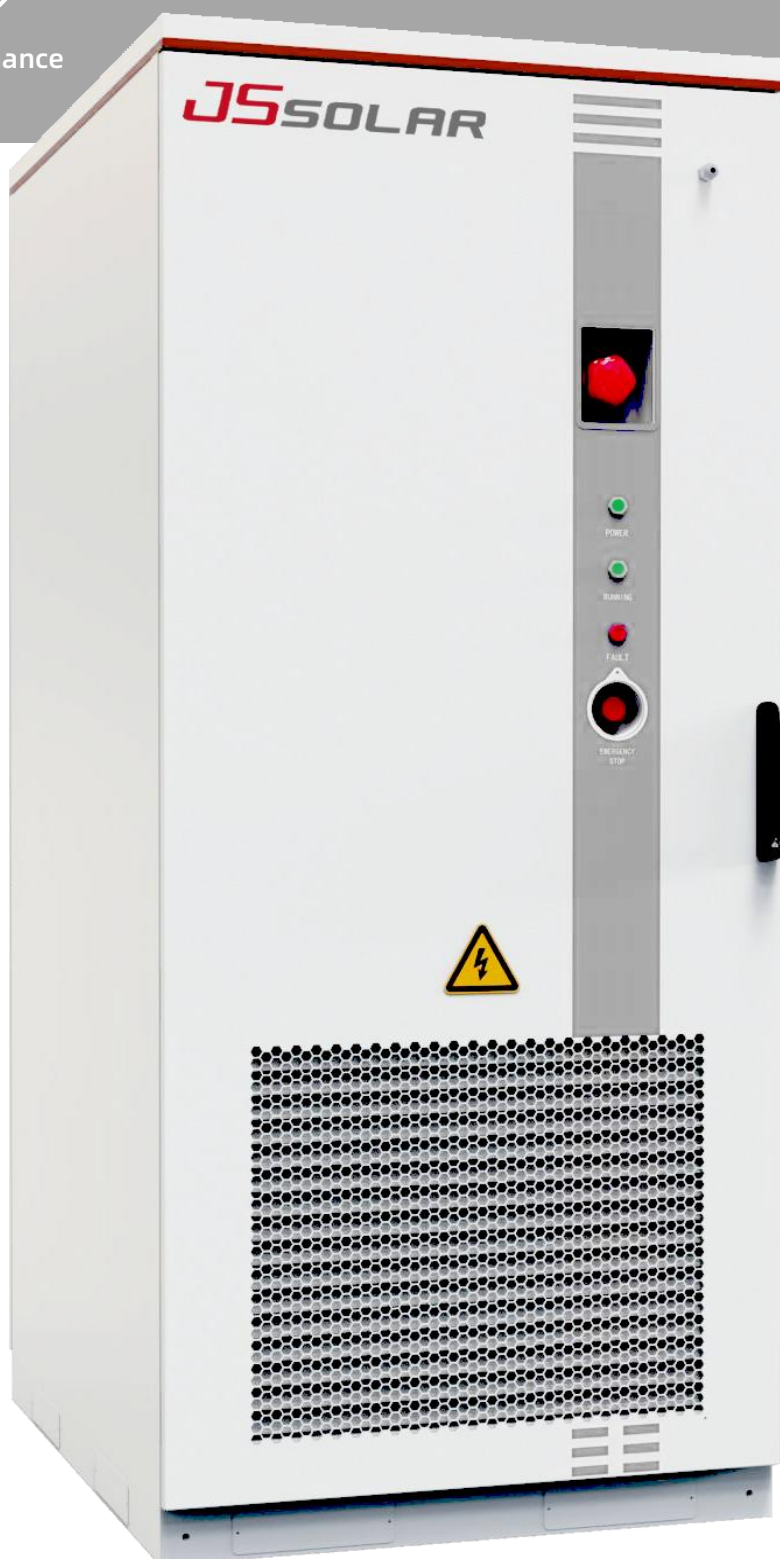


Easy Maintenance

Commercial & Industry
Solution

OUTDOOR ENERGY STORAGE SYSTEM

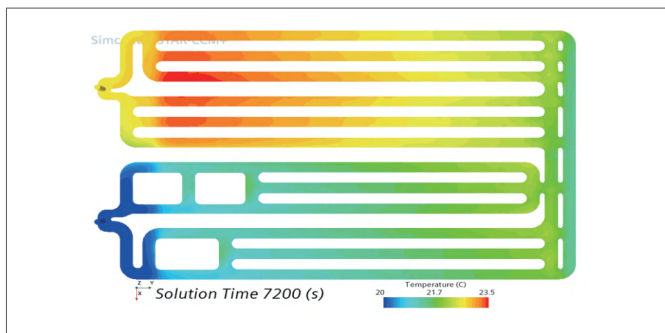
LES-241L120



Product Features

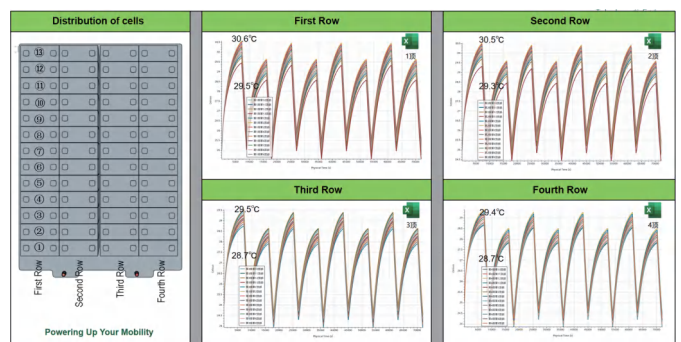
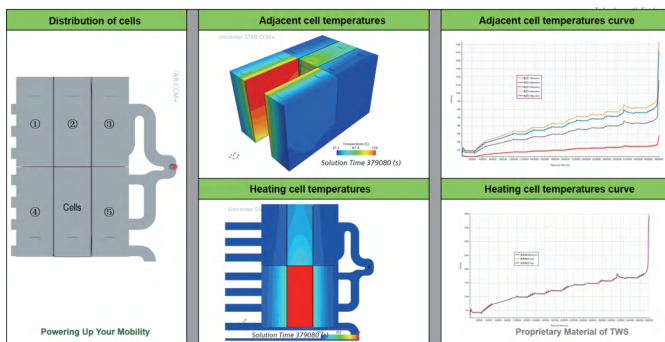
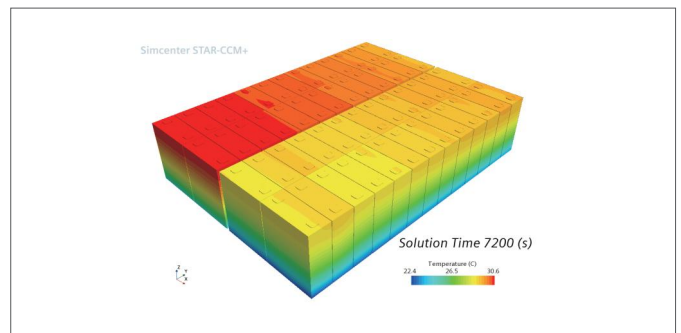
Safety

- Active early warning and multiple electrical protection functions.
- Selected well-known brand 314Ah cell, cell cycle life $\geq 11,000$ cycles.
- Fire warning function, automatic fire extinguishing alarm function.
- High protection ingress level, adaptable to various extreme environments.



Economical and High Efficiency

- The system has high energy density with smaller footprint.
- Integrated design, the system comes with equipment-level EMS, which can monitor equipment status in real time.
- Outdoor cabinet design and flexible combination, suitable for a variety of application scenarios.
- Convenient transportation and installation, quickly shortening the construction period.



The liquid cooling pipelines are non-uniformly distributed, effectively reducing the temperature difference between the cells in the battery pack and ensuring that the temperature difference is $\leq 2^{\circ}\text{C}$.

Diversified Configuration



Technical Parameters

Model	LES-241L120
-------	-------------

Battery

Battery Type	LFP
Rated Charge/Discharge Performance	0.5C
Nominal Voltage [V]	768
Operating Voltage Range [V]	672~876
Cell Rated Capacity [Ah]	314
Nominal Capacity [kWh]	241.15
Composition	1P240S

AC Output (On Grid)

Rated Output Power [kW]	120
Max. Output Current [A]	191
Rated Output Voltage [V]	3/N/PE, 400
Rated Output Frequency [Hz]	50/60
Power Factor Adjustable Range	0.9 (leading) ~0.9 (lagging)
DC Component	< 0.5% In
THDi	< 3% (@rated power)

AC Output (Off Grid)

Rated Output Power [kW]	120
Max. Output Current [A]	191
Rated Output Voltage [V]	3/N/PE, 230/400
Rated Output Frequency [Hz]	50/60
Unbalanced Load Capacity	100%

General Data

Ingress Protection	IP54
Battery Cooling Method	Liquid cooling system
Fire Fighting System	Aerosols, water fire protection system
Relative Humidity	0~95%, non-condensing
Temp. Range [°C]	-20~+50
Altitude [m]	4000 (> 2000 derating)
Communication	RS485
Communication Protocol	Modbus
Weight [kg]	≈2350
Dimension (W*D*H) [mm]	1000*1330*2350
Delivery Method	Integral transportation
Certificates	EN62477-1: 2012; EN IEC 61000; EN 50549-1/10; EN50549-10; TOR; G99

* In case of changes in product dimensions and parameters, the latest information from our company shall prevail without prior notice.

Application Scenarios

Electricity Saving

Peak-Load Shifting.



Factory



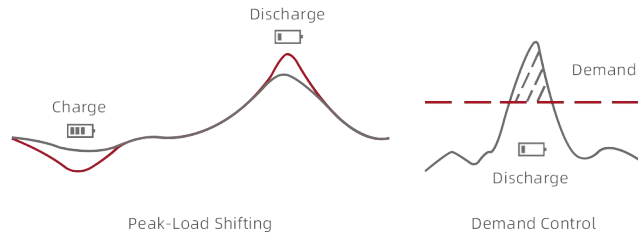
Office Block



Data Center



Charging Station



Power Expansion

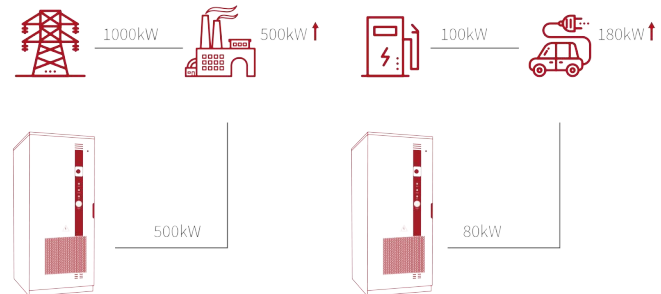
Discharge when the distribution capacity cannot meet the load demand to achieve the effect of virtual capacity expansion.



Factory



Charging Station



Backup Power Supply

Discharge to secure electricity supply in case of grid outage or limit on electricity supply.



Factory



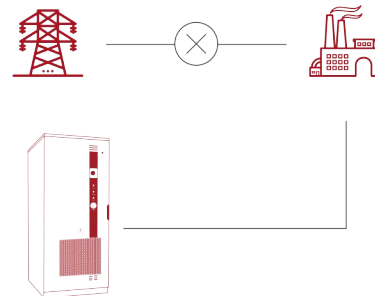
Office Block



Shopping Mall



Hotel



Demand Response

Enable power grid dispatching, Entitle dispatching subsidies.



Factory



Office Block



Shopping Mall

